



## STANDARD OPERATING PROCEDURE

### IT PASSWORD POLICY

#### ANNEXURE-1 PASSWORD SECURITY

Ref Doc No : **GEN-D 10013**

Annexure No : **GEN-D 10013/A01**

Revision : **00**

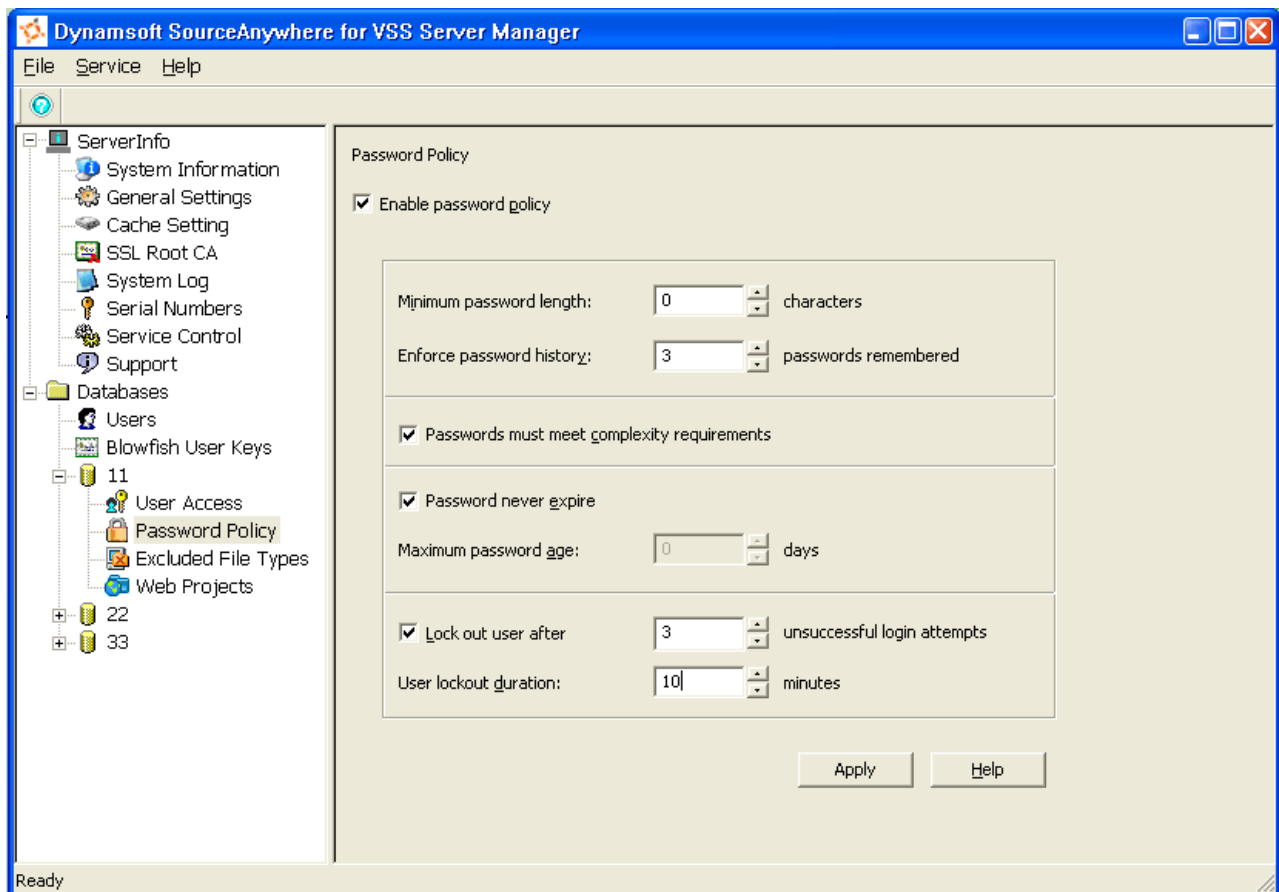
Supersedes : **Nil**

Format No : **SLS/QSP-001/F11.R00**

Status : **Draft**

Effective : -

Expiry : -



MASTER COPY